



BADGER BONSAI SOCIETY

Promoting and Enjoying the Ancient Art of Bonsai Since 1972

Badger News | A Publication of the Badger Bonsai Society | September 2019

Next Meeting Date:

Thursday Sep-12-2019 | 6:30 to 8:00pm
Olbrich Botanical Gardens
3330 Atwood Avenue, Madison, WI

AGENDA:

Bonsai Styles, Maple Identification

CLUB OFFICERS:

Co-Presidents Bill and Karl
Vice President Mary
Treasurer Gary
Web Master / Newsletter Wayne
Librarian Derek
Refreshments Elaine

President's Message

September-12th meeting

One of my favorite quotes is a Yogi-ism from, of course, Yogi Berra. "If you don't know where you are going, you might not get there." And like so much of what Berra said, it has different levels at which it can be examined, ranging from 'Huh?' to the profound. This one definitely belongs in the profound category.

Probably the most frequently asked question by beginners watching a demonstration is, "how do you know what to cut off?" This leads to what Yogi was saying: you have to have some idea of what the finished tree is going to look like. Thus, we have defined several styles of bonsai. Virtually every book on bonsai describes these basic artistic categories of style: formal upright, informal upright, slant, semi-cascade, cascade, windswept, clump, raft, and forest. We humans love to categorize stuff – it helps us to see patterns, similarities, and differences. — *Karl*

Inside This Issue

- President's Message 1
- Show 'n' Tell 2
- Other Bonsai Events & Info 2 - 3
- 2019 BBS Events..... 3
- MABA Focus: Ted Matson..... 4

Bonsai Styles

Our September meeting will feature long-time member and past president Tim speaking on bonsai styles. A familiarity with these styles will assist you in deciding what to keep and what to cut off as you work on your own trees.

Maple Identification

Depending on time availability, we will also look at maple identification. Ross Clarke has written a wonderful guide for the American Bonsai Society (ABS) on keys to identifying the maples most likely used for bonsai. (Mercifully, this does not include the Japanese maple cultivars, of which there are more than a thousand, and would take probably a lifetime of careful study to be even semi-literate in their identification.) So how does one distinguish Acer ginnala from trident maple? The leaves look very similar. Or, how does one distinguish sugar maple from red maple? Again, the leaves look very similar. The insightful keys that Ross Clarke suggests makes these identifications fast and easy.

July Succulent Videos

While we were not able to pull in a guest speaker on succulents, Karl found some very interesting videos on the web for desert rose bonsai. If you noticed, the demo-er (of Jerome's Bonsai Supply) was wearing plastic gloves ... that is because the milky sap of the desert rose is poisonous!

Show 'n' Tell

remember, bringing something related to bonsai to the meeting to show & tell about, will get you an additional ticket for our meeting door prize drawings!

At the August meeting, we had: Karl: schefflera (good for root over rock planting) and dwarf schefflera; Will: desert rose and elephant tree (in keeping with the succulents as bonsai topic); Barbara: a succulent arrangement; Mary: showing progress on her American Larch demo tree; Tim: the prior "bonsai-by-mob" demo (see pictures below left); Bill: his recent purchase of a Root Slayer shovel (see info below right) ... Thanks to all for sharing!

Tim's 2018
demo by
consensus tree
as it appears
now in
Aug-2019



Bill's Root Slayer shovel:
Google shows you can purchase
this or other similar tools at a
variety of stores / websites



Other Bonsai Shows or Bonsai Societies:

[Bonsai Societies of Florida](#) is an umbrella organization for 22 bonsai and bonsai-related societies in Florida. If you Google this, you can access the member societies and their activities.

The [Golden State Bonsai Federation \(GSBF\)](#) is an umbrella organization of bonsai societies in California and adjacent states. If you Google this, you can find out about numerous shows scheduled in that region. (Many new listings at the GSBF site; too many to list here; please follow the links.) There also are events scheduled at the three bonsai collections maintained by the GSBF.

The [Lonestar Bonsai Federation](#) is a confederation of 10 bonsai societies in the Texas-Louisiana area. If you click this link, you can see information about the individual clubs, galleries, and much more information.

[Bonsai Society of Greater Cincinnati Annual Show](#), Sept 14-15, Krohn Conservatory, 1501 Eden Park Drive, Cincinnati, Ohio

[Cleveland Bonsai Club](#), September 28-29, Rockefeller Park Greenhouse, 750 East 88th St., Cleveland, Ohio

[Milwaukee Bonsai Society 49th Annual Exhibit](#), Sept. 28-29, Sat. 10-5, Sun. 10-3. Boerner Botanical Gardens, Whitnall Park, Hales Corners, Wisconsin. Guest artist, Tyler Sherrod

[24th Annual Carolina Bonsai Expo](#), Oct. 12-13, North Carolina Arboretum, 100 Frederick Law Olmsted Way, Asheville, North Carolina.

Other Shows and Conventions (continued):

[Iowa Bonsai Association, Bonsai Show and Sale](#), Oct. 12-13, 9a-4:30p, Reiman Gardens, 1407 S. University Boulevard, Ames, Iowa

[Hidden Gardens \(Willowbrook-IL\)](#)

Visiting Bonsai Artists:

- Jan Culek, Oct 26 - 27, 2019
- Mauro Stemberger, Nov 9 - 10, 2019

Milwaukee Bonsai Society 49th Annual Exhibit, Sept. 28-29, Sat. 10-5, Sun. 10-3. Boerner Botanical Gardens, Whitnall Park, Hales Corners, Wisconsin. Guest artist, Tyler Sherrod

Iowa Bonsai Association, Bonsai Show and Sale, Oct. 12-13, 9a-4:30p, Reiman Gardens, 1407 S. University Boulevard, Ames, Iowa

[National Bonsai and Penjing Museum](#), 3501 New York Ave NE, Washington, DC July 1 – Sept 29: Workshops: Bonsai Basics with Tropical Trees

Bonsai Global Seminars Oct. 8-11, 2020. Kellogg Conference Hotel and the U.S. National Arboretum, Washington, DC. Hosted by: American Bonsai Society, National Bonsai Foundation, Bonsai Clubs International, Potomac Bonsai Association. This could be the most significant bonsai event many of us could ever attend. Please watch for updates.

Info provided by ABS (American Bonsai Society).

our website: badgerbonsai.net

Pearls of Wisdom ...

"A fool sees not the same tree that a wise man sees"
--- William Blake

"If you think shohin, or miniature bonsai, are for novices or the faint-hearted, try making one yourself. You'll change your mind as sure as night follows day."
--- Collin Lewis

Tentative 2019 Calendar for
Badger Bonsai Society meeting & events:
(date is 2nd Thursday unless noted differently below)

TBD – Trip to [Davidsan's Japanese Maples](#) in New Berlin-IL (west of Springfield-IL), stocking 500 of the 1000+ cultivars of Japanese maples

TBD – Slab making workshop TBD

TBD – Field trip to Mayflower Nursery, Hobart, WI

September meeting – Bonsai Styles

October meeting – American Bonsai Masters and examples of their work

November meeting – Tropical workshop; BBS elections; collection of ideas for 2020 BBS meeting topics and content

December meeting – Suiseki and daiza making

Jan-2020: Annual Membership Club Dinner

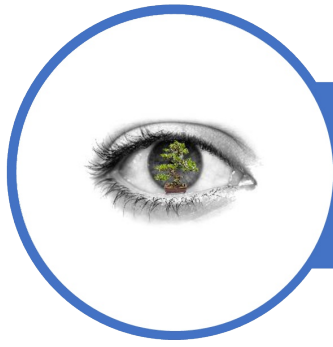
2020 Mid American Bonsai Alliance: Insights Into Bonsai, June 25-28, 2020 at The Four Points Sheraton Milwaukee North Shore (8900 North Kildeer Court, Milwaukee, WI). Hosted by the Milwaukee Bonsai Society. Additional information is being added frequently.

Watch For
MABA/Milwaukee 2020

www.milwaukeebonsai.org/maba



[click image for link](#)



MABA/MILWAUKEE 2020

WE COME TOGETHER TO MAKE OUR COMMUNITIES STRONGER
THROUGH BONSAI

MABA/MBS

The Mid-America Bonsai Alliance (MABA) is an organization made up of local bonsai clubs including The Milwaukee Bonsai Society (MBS) to create a rich and diverse community through its inspiring bonsai activities.

INTRODUCTION

On June 25-28, 2020, Bonsai artists and MABA members are heading to Milwaukee, WI for the MABA/Milwaukee Convention! In part to see headlining artist François Jeker from France, Ted Matson from California and any of the other eight artists. [Read more.](#)

TED MATSON



BEGINNER FREINDLY

Just getting started in bonsai, be sure to head to Milwaukee and join other enthusiasts, artist, and MABA members on June 25-28, 2020. Beginner friendly headlining artist Ted Matson from Southern California will help you get started.

Curator of the Huntington Bonsai Collection in greater Los Angeles, Ted Matson is well known for quality care and design of bonsai.



He is also recognized for his great service to the art of bonsai; someone who promoted the art of bonsai and encouraged cooperation and unity of effort to achieve excellence within the entire bonsai community. To impress the significance of this President's Gold Diamond Award, we should note only one other person has ever been bestowed this award and that was John Naka.

Ted Matson's service extends to our area clubs. MBS and others owe a great deal of our continued growth and success to him.

MABA Milwaukee 2020 is offering Japanese black pines that have been developed as shohin by Ted Matson. Another workshop on Experience with Nursery Material will provide guidance to develop bonsai using readily available nursery stock.

Milwaukee Bonsai Society through its Excellence in Bonsai program is honored to pick up all travel, hotel and meal expenses for this generous artist. Take advantage of this affordable opportunity, see a demonstration and take one of his four beginner friendly workshops.

WWW.MILWAUKEEBONSAI.ORG/MABA